

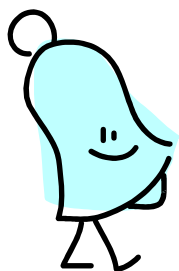


DAILY SCHEDULE 2010-2011

School Time 7:40 a.m. – 2:30 p.m.

Bell Schedule	Starts	Ends
Warning Bell	7:35	
First Period	7:40	8:30
Second Period	8:35	9:25
Third Period	9:30	10:20
Lunch A	10:25	10:50
Fourth Period Class A	10:55	11:45
Fourth Period Class B	10:25	10:55
Lunch B	10:55	11:20
Fourth Period Class B (cont.)	11:25	11:45
Fourth Period Class C	10:25	11:15
Lunch C	11:20	11:45
Fifth Period	11:50	12:40
Sixth Period	12:45	1:35
Seventh Period	1:40	2:30

All classes are 50 minutes long and hall passing is 5 minutes.



12770 Gateway Boulevard, Fort Myers, Florida 33913
239-768-3350 office · 239-768-3874 fax
www.gatewaycharterhigh.org

A Member of the Charter Schools USA Family of Schools.